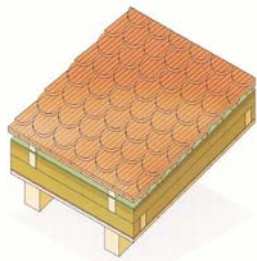
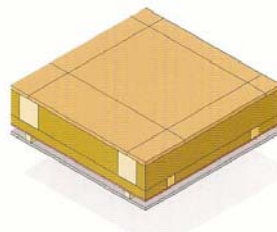


Production of Insulation Boards from Grass

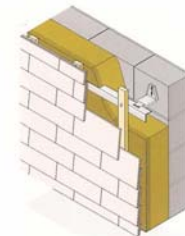
Grass can now be used for production of insulation boards. Insulation boards from grass perfectly combine winter cold protection, summer heat protection and sound insulation. Board density range: 25-120 kg/m³. Heat conductivity λ : 0.037-0.040 W / (m,K). Fire resistance: Euro-Class E.



Underneath the roof



Upon floors



Ventilated facade

The production process involves fibrillation of the raw material, separation of fibers from digestible components, and a boards production line. It is environmentally sound, can be realized at relatively small scale and can be combined with the production of renewable energy from the digestible components of grass. A production plant can stabilize and improve economic structures and living conditions in rural areas.



BPS AG owns and operates a pilot plant for demonstration of all technology aspects and for product demonstration.

It offers turn key production plants and related services and licenses, and marketing support for the products.